



Wordfast

Wordfast Pro – The next step in Translation Memory technology.

The creators of the #1 Translation Memory software for Microsoft Word are pleased to bring you the next step in Translation Memory for any platform. Wordfast Pro is a next generation TM software designed to address the needs of multinational corporations, language service providers, and individual translators. Wordfast Pro offers all of the benefits you've come to expect from Wordfast products, including speed, ease-of-use, and value for your technology investment. Users can now take advantage of these benefits in a stand-alone, platform independent, java-based editing environment (while maintaining the option of using the MS Word-based Wordfast Classic).

Ease of Use

Wordfast Pro's intuitive design and customizable interface leads to a greatly accelerated learning curve for users. Proficiency is made virtually instantaneous by offering users customizable shortcut key mappings, including pre-configured shortcut key maps for all major TM systems. Further, Wordfast Pro provides users the ability to toggle in real-time between table and document translating views. The result is a TM system that can be adopted with minimal training as users can work in the manner and style they are most accustomed to.

Power to Handle Complex Tasks

Wordfast Pro features enhanced batch processing functionality, enabling users to handle complex tasks with greater efficiency. In the professional version, Wordfast Pro also integrates with a powerful Project Management module that allows users to analyze, extract frequently occurring segments, pre-translate, and cleanup hundreds of files with lightning speed.

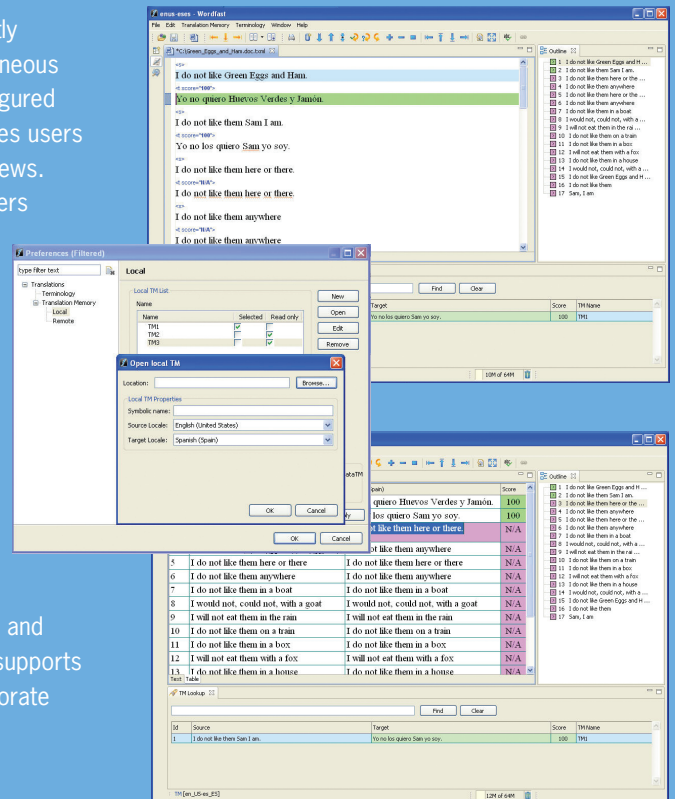
Compatibility and Versatility

Unique among leading translation tools in the marketplace, Wordfast Pro has been designed to run on multiple platforms, including Windows, Linux, and Mac. As always, Wordfast Pro is compatible with any translation tool that supports the TMX standard. This allows for seamless integration with LSP and corporate workflows without lengthy transition and deployment times.

Collaborative Power

Wordfast Pro remains an industry leader for TM sharing and translator collaboration.

By offering the ability to integrate with server-based TM applications, Wordfast Pro enables global real-time collaboration. Users have up-to-the-second access to translated content from their defined workgroups, resulting in increased leverage, re-use, and consistency.



Take the next step in Translation Memory technology.

Why Use Wordfast?

Speed

Wordfast boasts the industry's leading lookup speed, with a retrieval time of less than half a second per TU.

Platform Independence

Unlike other major TM tools on the market, Wordfast runs on any platform, including Windows, Linux, and Mac.

Enhanced File Format Support

Wordfast Pro can handle a wider variety of file formats than ever before, including DOC, PPT, XLS, HTML, XML, ASP, and JSP.

Link to Multiple External Reference Materials

Wordfast offers the ability to link simultaneously to multiple TMs (remote and local), glossaries, and dictionaries.

Customizable Interface

Wordfast offers users the ability to define their working environment by customizing views and personalizing their shortcut keys.

Batch Processing

Wordfast Pro features enhanced batch analysis, extraction, pre-translation, and cleanup functionality.

Server-Based TM Integration

Wordfast Pro offers the ability to integrate with server TM applications, allowing for real-time collaboration of linguistic resources for maximum leverage and content re-use.

Price

Wordfast Pro is the highest value product in the marketplace. Requiring significantly less investment than other leading TM tools, Wordfast Pro is priced within the reach of all corporations, LSPs, and individual translators.

Risk Free Trial

As always, Wordfast will offer a free demo version available for download at www.wordfast.com. Install Wordfast Pro and run it today to see if it is the right solution for you.

Active Worldwide User Base

Wordfast currently boasts over 15,000 active customer deployments worldwide, making it the second most widely used Translation Memory software in the world. Driven primarily by the positive reviews of users and industry experts, Wordfast's client base has grown to include leading organizations such as the United Nations, NASA, McGraw-Hill, Nomura Securities, a wide array of educational institutions, and thousands of freelance linguists.

Customer Support

Wordfast users rank our support program among the highest in the industry. All Wordfast licenses come with hotline access to our global support center, facilitating the deployment and adoption of Wordfast Pro.

Technical Specifications

- Windows XP and higher
- Mac OS 7 and higher (including OS X)
- Linux

Translation Memory

- Supports up to 1,000,000 translation units per TM
- Supports up to TMX 1.4
- Average retrieval speed of less than half a second per segment

Glossaries

- Supports up to 250,000 entries per glossary
- Tab-delimited format can be imported and exported for easy maintenance and migration

Visit us online at www.wordfast.com, where you can obtain more information, download a free demo version, or purchase your own Wordfast license.