



Wordfast

WfServer – The most efficient and cost effective TM server solution for collaborative translation.

Wordfast Server (WfServer) is a secure server-based Translation Memory Tool, which enables language service providers, corporations, and translation workgroups to reduce translation costs and speed time-to-market. By taking advantage of next-generation technology, WfServer puts the power of server-side translator collaboration within everyone's reach.

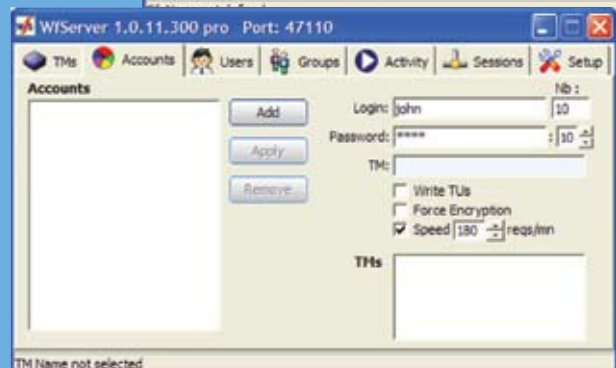
By employing a sophisticated machine code index, WfServer achieves a unique combination of maximum speed, scalability and stability. Our customers also enjoy not being locked into a proprietary database format.

Powerful team features enable multiple internal or external resources to connect simultaneously to one or more Translation Memories via the internet. TM lookup results and concordance searches can be leveraged in real-time to benefit all project participants. This results in immediate and significant gains for all linguistic team members regardless of their location.

WfServer uses an intuitive permission-based management system which enables project managers and administrators to easily assign, modify, or remove rights of project participants.

Wordfast has always been committed to providing customers with tools that support industry standard formats, and WfServer is no exception. WfServer can import TUs from any TMX compatible TM tool, allowing for a simple and seamless transition from/to other solutions.

Consistent with our belief to put translation tools within everyone's reach, WfServer offers the power of server-side Translation Memory for a fraction of the cost of our competitors.



WfServer can help LSPs and Corporations save 20% to 30% over Desktop TM alone.

Why Use Wordfast Server?

- **Increased Productivity**

Real-time connectivity of globally distributed translators increases the amount of translation that can be leveraged, resulting in efficiencies not possible with Desktop TM.

- **Increased Savings**

Connecting to a single server-based TM leads to maximum content re-use, resulting in savings of 20% to 30% over Desktop TM alone.

- **High-Speed Performance and Maximum Stability**

WfServer can accommodate thousands of simultaneous users leveraging up to a billion TUs without sacrificing performance.

- **Compatibility and Simple Migration**

The ability to import TUs from any TMX compliant tools allows for seamless integration of TM assets and the elimination of lengthy deployment times or steep learning curves.

- **Managerial Control**

Project Managers and administrators are able to maintain control over TM assets by assigning permissions to project participants.

- **Security**

WfServer meets IT security standards for web access to proprietary content.

- **Technical Support**

Users have access to 24/7 online technical support.

- **Value**

Capture the full benefit and savings of server-side TM for a fraction of the cost of competing solutions.

Installation and Technical Specifications

WfServerPro.exe is a standard 32-bit Windows start-up application that can run on the following operating systems:

- Windows 2000™
- Windows XP™
- Windows 2003 server™
- Windows Vista™
- Windows 2008 server